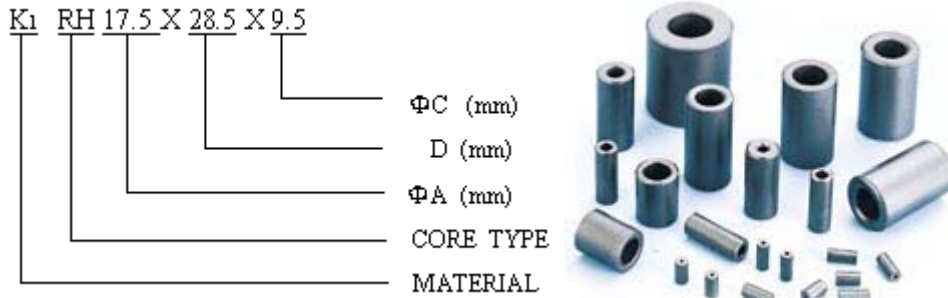
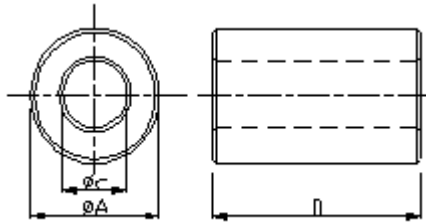


K1 RH SERIES(CYLINDRICAL CORES)

1.ORDERING CODE



2.SHAPES



iiii

3.DIMENSIONS

NO.	FERRICO PART NO.	IMPEDANCE(i_s)TYP.		NO.	FERRICO PART NO.	IMPEDANCE(i_s)TYP.	
		25 MHz	100 MHz			25 MHz	100 MHz
		Unit:mm					
1	K1 RH 1.9X4.0X0.76	29	70	61	K1 RH 12.0X25.0X6.0	120	187
2	K1 RH 2.5X4.0X1.0	32	68	62	K1 RH 12.0X20.0X6.5	87	141
3	K1 RH 2.5X5.0X0.8	40	61	63	K1 RH 12.0X24.5X7.0	95	165
4	K1 RH 2.54X6.0X1.49	29	67	64	K1 RH 12.0X15.0X7.3	53	98
5	K1 RH 3.0X3.0X1.5	19	40	65	K1 RH 12.0X15.0X7.5	51	93
6	K1 RH 3.5X3.0X1.3	23	40	66	K1 RH 12.0X15.0X8.0	48	89
7	K1 RH 3.5X4.7X0.76	49	82	67	K1 RH 12.0X15.0X8.5	41	83
8	K1 RH 3.5X4.7X0.8	47	94	68	K1 RH 12.2X12.2X7.9	46	89
9	K1 RH 3.5X9.0X0.8	90	130	69	K1 RH 12.2X25.0X8.4	71	118
10	K1 RH 3.5X12.0X0.8	110	151	70	K1 RH 12.3X25.0X4.9	163	251
11	K1 RH 3.5X6.0X1.0	50	82	71	K1 RH 12.3X25.4X4.95	162	251
12	K1 RH 3.5X3.5X1.2	27	68	72	K1 RH 12.7X15.0X7.9	51	96
13	K1 RH 3.5X6.0X1.2	47	86	73	K1 RH 12.7X12.7X7.9	46	86
14	K1 RH 3.5X4.0X1.3	34	72	74	K1 RH 13.0X20.0X5.1	131	203
15	K1 RH 3.5X6.0X1.3	47	87	75	K1 RH 14.2X15.0X6.35	84	138
16	K1 RH 3.5X6.0X1.5	38	65	76	K1 RH 14.2X28.5X6.35	161	252
17	K1 RH 3.5X10.0X1.3	71	121	77	K1 RH 14.2X15.0X6.6	84	138
18	K1 RH 4.0X5.0X2.0	31	71	78	K1 RH 14.2X28.5X6.6	140	235
19	K1 RH 4.0X10.0X2.0	51	93	79	K1 RH 14.2X15.0X7.0	78	132
20	K1 RH 4.0X10.0X2.15	44	70	80	K1 RH 14.2X28.5X7.0	138	217
21	K1 RH 4.5X5.0X1.6	42	82	81	K1 RH 14.2X15.0X7.25	134	202
22	K1 RH 4.8X4.8X2.4	25	43	82	K1 RH 14.2X28.5X8.0	111	182
23	K1 RH 5.0X5.0X2.3	35	74	83	K1 RH 15.6X19.0X7.0	104	168
24	K1 RH 5.5X8.0X2.7	37	55	84	K1 RH 15.6X28.5X7.0	154	249
25	K1 RH 5.8X10.0X3.4	42	92	85	K1 RH 16.0X16.0X8.0	79	129

26	K1 RH 6.0X10.0X2.0	76	128	86	K1 RH 16.0X28.0X8.0	141	219
27	K1 RH 6.0X6.0X3.0	35	75	87	K1 RH 16.0X17.0X9.0	73	121
28	K1 RH 6.0X10.0X4.0	34	66	88	K1 RH 16.0X28.0X9.0	109	173
29	K1 RH 6.35X15.8X3.18	80	142	89	K1 RH 16.0X28.0X10.0	93	152
30	K1 RH 6.4X9.5X3.2	52	96	90	K1 RH 17.0X25.0X7.0	154	243
31	K1 RH 6.4X16.0X3.2	79	129	91	K1 RH 17.0X28.0X7.0	176	266
32	K1 RH 7.5X8.0X2.6	53	94	92	K1 RH 17.0X25.4X8.76	118	186
33	K1 RH 7.8X10.0X3.2	48	98	93	K1 RH 17.5X25.0X9.5	105	168
34	K1 RH 7.8X12.5X4.0	61	107	94	K1 RH 17.5X28.5X9.5	121	190
35	K1 RH 8.0X10.0X3.6	60	104	95	K1 RH 17.5X28.5X10.0	114	182
36	K1 RH 8.0X20.0X3.6	114	178	96	K1 RH 17.5X28.5X10.7	97	157
37	K1 RH 8.0X10.0X4.0	53	94	97	K1 RH 17.5X25.5X11.0	90	151
38	K1 RH 9.0X9.0X5.0	42	82	98	K1 RH 18.67X28.5X12.7	82	139
39	K1 RH 9.5X10.0X5.0	51	93	99	K1 RH 18.4X28.0X9.5	109	188
40	K1 RH 9.5X16.0X5.0	68	116	100	K1 RH 18.67X28.5X10.1	120	204
41	K1 RH 9.0X24.5X5.0	102	165	101	K1 RH 18.67X34X10.1	144	234
42	K1 RH 9.3X9.5X5.2	48	91	102	K1 RH 18.7X28.5X11.2	106	170
43	K1 RH 9.5X10.0X5.0	50	92	103	K1 RH 19.0X27.0X12.8	78	134
44	K1 RH 9.5X19.5X5.0	88	143	104	K1 RH 19.0X29.1X13.0	80	136
45	K1 RH 9.5X9.5X5.2	44	85	105	K1 RH19.0X50.8X11.5	185	285
46	K1 RH 9.5X10.2X5.2	52	98	106	K1 RH 20.5X28.5X11.5	112	182
47	K1 RH 9.66X10.2X3.8	68	112	107	K1 RH 21.0X37.0X9.0	221	234
48	K1 RH 10.0X10.0X5.0	53	95	108	K1 RH 26.0X28.5X13.0	133	201
49	K1 RH 10.0X14.0X6.0	50	86				
50	K1 RH 10.0X14.0X6.5	46	88		TOLERANCE IN GENERAL		
51	K1 RH 10.0X10.0X7.0	30	69		Under 6.0 μ m 0.3		
52	K1 RH 10.0X17.0X5.0	85	147				
53	K1 RH 10.5X20.0X5.5	98	149		Under 18.0~6.0 μ m 0.5		
54	K1 RH 10.5X14.0X5.6	60	108				
55	K1 RH 10.5X20.5X5.6	93	152		Under 24.0~18.0 μ m 0.6		
56	K1 RH 11.0X18.5X5.0	104	165				
57	K1 RH 11.0X35.0X5.0	186	280		Under 30.0~24.0 μ m 0.8		
58	K1 RH 11.5X35.0X5.0	200	300				
59	K1 RH 11.8X15.0X7.3	56	101				
60	K1 RH 12.0X28.5X5.6	149	232		Under 40.0~30.0 μ m 1.5		

REMARK:1.TOLERANCE CAN BE MODIFIED TO FIT SPECIFIED APPLICATION
 iiiii 2.OTHER SIZE ARE AVAILABLE UPON REQUEST

CLOSE