



IEC CONNECTORS PC BOARD AND SCREW MOUNTING

INTRODUCTIONS

1. Designed to meet globally accepted IEC publication 320 Class 1, that allows users to comply with industry standard in power entry requirement.
2. Connector for cold condition, with pin temperature 65°C max.
3. Nickel-plated brass pins for soldering on PC board.
4. SK-1010: UL, CSA, VDE, NEMKO, DEMKO, SEMKO & SETI approved.
SK-1019: UL, CSA, VDE, NEMKO, DEMKO, SEMKO & SETI approved.
SK-1013: UL, CSA approved.

* Can not mark N because there is no standard for regulation.

MECHANICAL CONSTRUCTION

SPECIFICATIONS

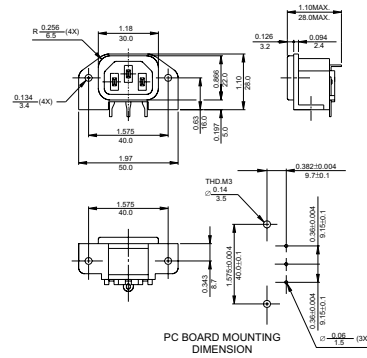
1. Rated voltage: 250VAC
2. Minimum insulation resistance at 500VDC: 10M OHM
3. Dielectric strength (one minute): 2000VAC between pins
4. Flammability class: UL 94V-0

TYPE & RATED CURRENT

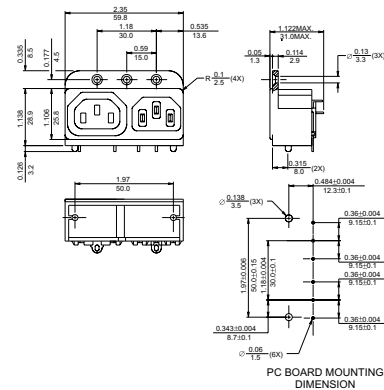
DELTA PART NUMBER		SK-1010, SK-1019	SK-1013
RATED CURRENT (AT 250VAC)	UL/CSA	15A	*10A/15A
	VDE	10A	-
	NORDIC	10A	-
CONNECTOR TYPE	MALE	△	△
	FEMALE		△



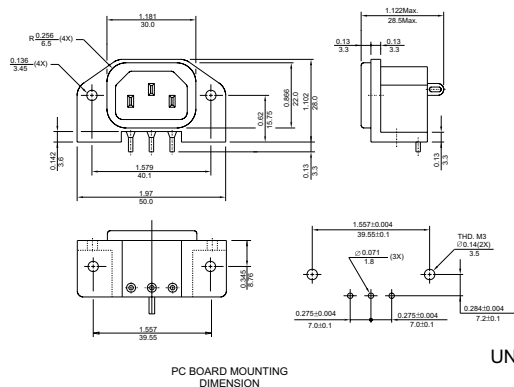
SK-1010



SK-1013



SK-1019



UNIT: INCH
mm