

SK Series



UL Recognized
CSA Certified
VDE Approved



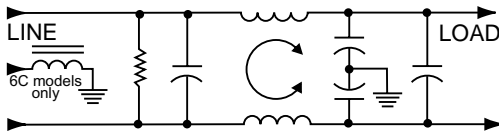
SK Series – 3, 6 & 10 Amp Models

This series of RFI filters was designed to reduce conducted noise to acceptable limits for equipment that must comply with the FCC specifications in the USA and CISPR specifications in Europe.

The SK (Super K) series filters use significantly higher element values than the general purpose K series, which makes them better suited for equipment with line-to-ground and line-to-line conducted emissions, including switch mode power supplies.

The ESK models meet the very low leakage current requirements of VDE portable equipment and (120 Volt) UL 544 non-patient medical equipment.

Electrical Schematic



Resistor location for reference only.

Specifications

Maximum leakage current, each line-to-ground	VSK Models	ESK Models
@ 120 VAC 60 Hz:	.4 mA	.21 mA
@ 250 VAC 50 Hz:	.7 mA	.36 mA
Hipot rating (one minute):		
line-to-ground		2250 VDC
line-to-line		1450 VDC
Operating frequency:		50/60 Hz
Rated voltage (max.):		250 VAC
Rated current:		
3VSK/3ESK		3A
6VSK/6ESK		6A
10VSK/10ESK		10A

Minimum insertion loss in dB:

Line-to-ground in 50 ohm circuit

Current Rating	.01	.08	.1	.15	.5	1	5	10	30
VSK									
3A, 6A, 10A	4	23	25	29	43	44	42	42	30
ESK									
3A, 6A, 10A	4	22	24	28	42	40	36	36	27

Line-to-line in 50 ohm circuit

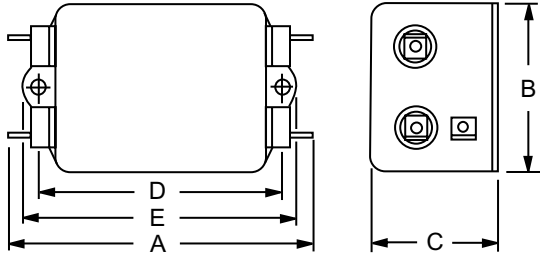
Current Rating	.01	.08	.1	.15	.5	1	5	10	30
VSK									
3A, 6A	1	3	10	25	59	65	62	40	40
10A	1	3	3	10	55	65	65	50	50
ESK									
3A, 6A	1	3	10	25	59	65	62	40	40
10A	1	3	3	10	55	65	65	65	45

20 and 30 amp SK models on page 84.

SK Series

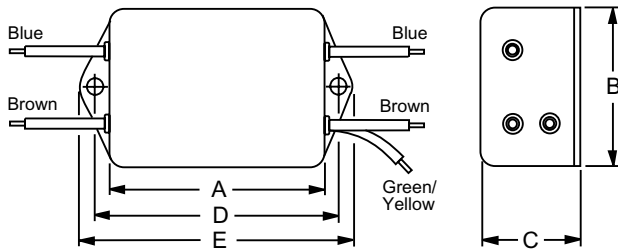
Case Styles

SK1



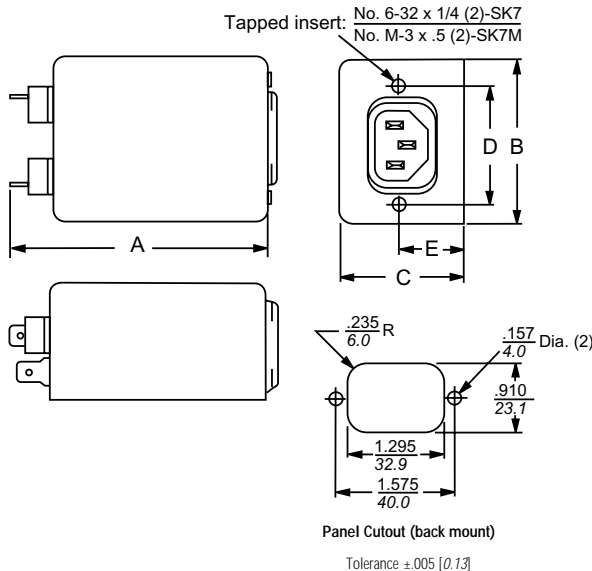
Typical dimensions:
 Terminals: .250 [6.35] (5)
 Slot: .07 x .16 [1.8 x 4.1]
 Holes: .07 [1.8] Dia. (4)
 Mounting holes: .188 [4.78] Dia. (2)

3A-SK3



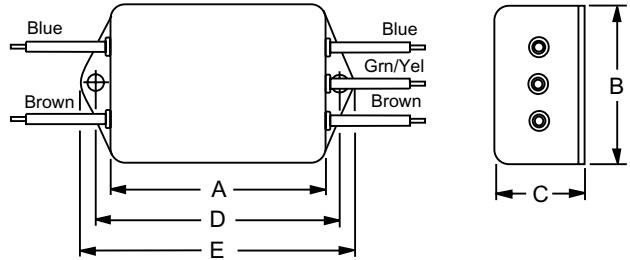
Typical dimensions:
 Wire leads: 4.0 [101.6] Min.
 Mounting holes: .188 [4.78] Dia. (2)

SK7 & SK7M (with metric insert)



Typical dimensions:
 Terminals: .250 [6.35] (3)
 Slot: .07 x .16 [1.8 x 4.1]
 Holes: .07 [1.8] Dia. (2)

6A & 10A-SK3



Typical dimensions:
 Wire leads: 4.0 [101.6] Min.
 Mounting holes: .188 [4.78] Dia. (2)

Case Dimensions

Part No.	A (max)	B (max)	C (max)	D $\pm .015$ $\pm .38$	E (max)
3VSK1, 3ESK1	3.85 97.8	2.07 52.6	1.16 29.5	2.938 74.63	3.35 85.1
3VSK3, 3ESK3	2.56 65.0	2.07 52.6	1.16 29.5	2.938 74.63	3.35 85.1
3VSK7, 3VSK7M, 3ESK7, 3ESK7M	3.21 81.5	2.25 57.2	1.53 38.9	1.575 40.01	0.63 16.0 †
6VSK1, 6ESK1	4.34 110.2	2.25 57.2	1.28 32.5	3.427 87.05	3.83 97.3
6VSK3, 6ESK3	3.05 77.5	2.25 57.2	1.28 32.5	3.427 87.05	3.83 97.3
6VSK7, 6VSK7M, 6ESK7, 6ESK7M	3.21 81.5	2.25 57.2	1.78 45.2	1.575 40.01	0.63 16.0 †
10VSK1, 10ESK1	4.97 126.2	2.25 57.2	1.78 45.2	4.063 103.2	4.46 113.3
10VSK3, 10ESK3	3.69 93.7	2.25 57.2	1.78 45.2	4.063 103.2	4.46 113.3
10VSK7, 10VSK7M, 10ESK7, 10ESK7M	4.34 110.0	2.25 57.2	1.78 45.2	1.575 40.01	0.63 16.0 †

† ±.02 [±.5]

Part Numbers

3VSK1	3ESK1
3VSK3	3ESK3
3VSK7	3ESK7
3VSK7M	3ESK7M
6VSK1	6ESK1
6VSK3	6ESK3
6VSK7	6ESK7
6VSK7M	6ESK7M
10VSK1	10ESK1
10VSK3	10ESK3
10VSK7	10ESK7
10VSK7M	10ESK7M
Line Cord No. (K7/K7M)	GA400